

# Catalogue 2023-25



## **WARREN HOBSON**

General Manager Sales & Product Development

m: 0274 949 994 t: 0800 LEFROY

e: warrenh@lefroyvalley.co.nz

## **PAULA O'HANLON**

Technical Sales Representative

m: 021 731 009 t: 0800 LEFROY

e: paulao@lefroyvalley.co.nz

## **RICHARD KAY**

Regional Sales Manager

m: 021 241 0222

e: richardk@lefroyvalley.co.nz

## **DAMON NIELSEN**

Regional Sales Manager

m: 021 884 680 t: 0800 LEFROY

e: damonn@lefroyvalley.co.nz

## ARTICHOKE - *Cynara scolymus*

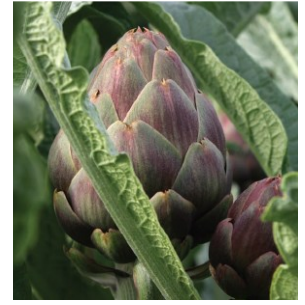


### GREEN QUEEN F1 *Green Globe type : The queen in size and quality*

- Plant : Very vigorous plant
- Fruit : Ellipsoidal head with big size
- Cycle : Medium

### OPAL F1 *Violetto type : The purple artichoke which changed the market*

- Plant : Vigorous and open
- Fruit : Globular form with light purple colour
- Cycle: Very early



## CARROT - *Daucus carota*



### ROMANCE F1

*Romance* is great for bunching

- Tall upright foliage with strong attachment
- Very cylindrical smooth roots, deep orange colour
- Strong against breaking
- Very attractive with good taste

**Intermediate Resistance to:** *Alternaria dauci*

Sow	Harvest
September to L January	M November to E May



Snowman



Creampak

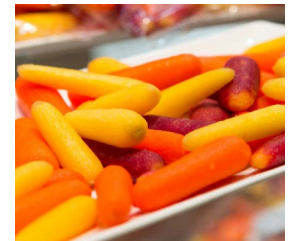


Yellowbunch

### COLOURS

**Imperator Carrots** in a great range of colours

- Tall upright foliage with strong attachment
- Slightly tapered smooth roots
- Suitable for bunching, cut and peel, or juice



Purple Elite



Purple Snax

## CUCUMBER - MINI *Cucumis sativus*



### ECLIPSE

*Eclipse* is a Lebanese cucumber for Winter production

- Single fruiting, high vigour and yield
- Dark green ribbed fruits average 16-18cm in length
- Cylindrical fruit shape with slight neck

**IR:** CMV (Cucumber mosaic virus), Px (Powdery mildew)

Sow	Harvest
Autumn Winter	Winter Spring



## CUCUMBER - MINI *Cucumis sativus*



### SEEGREEN

**Seegreen** is a Lebanese cucumber for Spring to Autumn production

- Multi fruited for Spring, Summer, Autumn production
- Dark green cylindrical fruits average 16-18cm in length
- Highly vigorous open plant with short internodes

**HR:** CYSDV (Cucumber yellow stunting disorder virus) **IR:** CVYV (Cucumber vein yellowing virus), Px (Powdery Mildew), Downy Mildew

Sow	Harvest
L Winter to E Summer	Spring to Autumn

## CUCUMBER - SLICING *Cucumis sativus*



### EQUILIBRATO

**Equilibrato** is a slicer for year round production

- Reliable fruit production through the hot summer season
- Dark green cylindrical shape with some spines
- Fruit has a sweet bitter-free taste

**IR:** CMV (Cucumber mosaic virus) CVYV, Px

Sow	Harvest
All Year	All Year

## CUCUMBER - TELEGRAPH *Cucumis sativus*



### ANCLA

**Ancla** is for spring, summer and autumn production

- Very dark green ribbed fruit, short neck
- Open, strong generative plant including laterals
- High yield with consistent quality until the end

**HR:** Cca (Target leaf spot), Ccu (Scab and Gummosis), Px (Powdery mildew) CVYV (Cucumber vein yellowing virus), CYSDV (Cucurbit yellow stunting disorder virus)

Sow	Harvest
L Winter to L Summer	Spring to Autumn



### REMO

**Remo** is for cool season production

- Strong plant with small leaves
- High yield of uniform quality fruit
- Dark green fruit with short neck

**HR:** CYSDV, CMV, Ccu, Cca **IR:** CVYV, Px

Sow	Harvest
Autumn	E Winter to L Spring



### SQISITO

**Sqisito** has a vigorous plant habit

- Generative plant for long cycle production
- High quality fruit - dark green, medium length, slight neck
- High production in warm conditions

**HR:** CVYV, Px **IR:** CYSDV

Sow	Harvest
L Winter to L Summer	Spring to Autumn



### TARAY

**Taray** is for Spring, Summer & Autumn production

- Healthy plant with high disease resistances
- Dark green shiny fruits with good ribbing and short necks
- Vigorous plant with strong main stem and lateral production

**HR:** CVYV, Px, Cca, Ccu **IR:** CYSDV

Sow	Harvest
L Winter to L Summer	Spring to Autumn

LEEK - *Allium porrum*

Key	Duraton			Krypton			Belton			Shafton			Chiefton			Megaton			Pluston			Longton		
	Sow	Transplant	Harvest	Sow	Transplant	Harvest	Sow	Transplant	Harvest	Sow	Transplant	Harvest	Sow	Transplant	Harvest	Sow	Transplant	Harvest	Sow	Tranplant	Harvest	Sow	Transplant	Harvest
Late Dec																								
Mid Dec																								
Early Dec																								
Late Nov																								
Mid Nov																								
Early Nov																								
Late Oct																								
Mid Oct																								
Early Oct																								
Late Sept																								
Mid Sept																								
Early Sept																								
Late Aug																								
Mid Aug																								
Early Aug																								
Late July																								
Mid July																								
Early July																								
Late June																								
Mid June																								
Early June																								
Late May																								
Mid May																								
Early May																								
Late April																								
Mid April																								
Early April																								
Late March																								
Mid March																								
Early March																								
Late Feb																								
Mid Feb																								
Early Feb																								
Late Jan																								
Mid Jan																								
Early Jan																								

## LEEK - *Allium porrum*



Over 25 years Nunhems has developed a strong foundation for high quality hybrid Leek breeding.

To satisfy the market in NZ, the focus has been to provide high quality leeks with uniformity on pack out.

In particular, attributes like long shanks, high yield, easy cleaning with an attractive plant architecture are intrinsic to the range.

Nunhems comprehensive Leek portfolio provides varieties suitable for the many different regions throughout NZ.



## LETTUCE - COS MINI (LITTLE GEM) *Lactuca sativa*



### COSBEE

*Cosbee* is a compact plant for warm season harvest

- Early filling, excellent compact heart shape, sweet taste
- Very strong against bolting and tipburn
- Good weight and strong disease resistance

HR: BL:1-28,30-32, Nr:0, Fol:1, IR: LNSV

Sow	Harvest
June to February	October to May



### LEH 3228

*LEH 3228* is a small cos for mechanical harvest

- Early filling, excellent compact heart shape
- Crisp texture
- Even sized leaves separate easily, great for processing

HR: BL:1-35,37, Nr:0,LNSV IR: Fol:1,4



### QUEENBEE

*Queenbee* is a compact plant for cool season harvest

- Pretty presentation
- Upright shape with good weight
- Strong disease resistance

HR: BL:1-36, Nr:0, Fol:1, IR: LNSV

Sow	Harvest
February to May	June to September



### SPLASHBEE

*Splashbee* has a wide harvest window

- Dark green with slight blister
- Very strong against bolting and tipburn
- Good weight and shape for twin packs

HR: BL:1-36

Sow	Harvest
June to February	October to May



### THEMES

*Themes* is a brilliant green Gem suitable for hydro and outdoor production

- Good internal quality with compact shape
- Strong for tipburn
- High vigour, height 15cm
- Late filling with smooth leaves, easy to separate

HR: BL:1-32,34-36, Nr:0, LNSV

Sow	Harvest
July to February	November to June
Sow Hydro	Harvest
All Year	All year



## LETTUCE - COS MINI *Lactuca sativa*



### WINBEE

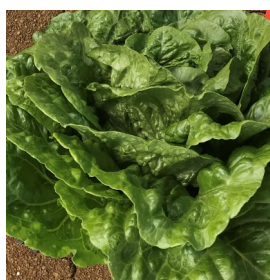
*Winbee* is a medium green compact plant for cool season harvest

- Late filling
- Upright shape with medium green colour
- Slightly blistered leaf

HR: BL:1-36, IR: Fol:1

Sow	Harvest
L Summer to E Winter	Cool Season

## LETTUCE - COS MIDI *Lactuca sativa*



### GLAMORAL

*Glamoral* is a stable winter midi cos

- Dark green blistered leaves
- Late closing with open shape
- Nice internal heart shape

HR: BL:1-30,32,33,35

Sow	Harvest
February to May	June to September

## LETTUCE - COS LARGE *Lactuca sativa*



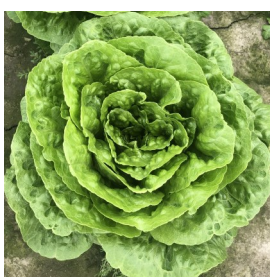
### AMALDA

*Amalda* is a high vigour reliable winter large cos

- Late closing medium green colour
- Very strong against bolting and tipburn
- High vigour providing excellent size even in cool winter conditions

HR: BL:1-32, Nr:0, CR, LNSV, LMV, Fol:1,4

Sow	Harvest
February to May	June to September



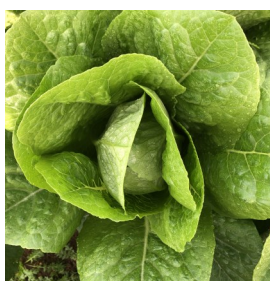
### MAGISTRAL

*Magistral* is a vigorous large cos for winter harvest

- Late filling
- Very strong against bolting and tipburn
- Medium green colour and good weight

HR: BL:1-34,36, Nr:0, LNSV

Sow	Harvest
February to May	June to September



### OLGADA

*Olgada* is a versatile large cos for warm season harvest

- Nice closed heart shape
- Early filling with good weight
- Good for processing and sleeved

HR: BL:1-30,32-36, Nr:0, Fol:1, LNSV

Sow	Harvest
August to February	November to May



### SIDERAL

*Sideral* is a medium green compact large cos with smooth leaves

- Suited for warm season harvest
- Good for processing and sleeves
- Strong against bolting and tip burn

HR: BL:1-29,32,33,36, Nr:0, LNSV, CRR

Sow	Harvest
August to February	November to May

## LETTUCE - CRISP *Lactuca sativa*



### ASPIRATA

*Aspirata* is for spring harvest

- Clean butt and easy to harvest
- Ideally suited to harvest in spring
- Good vigour, excellent wrapper leaves and round head shape

HR: BL:1-36, Nr:0, LNSV

Sow	Harvest
June to August	October to E December



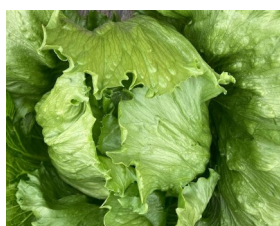
### ESKY

*Esky* is for cool winter harvest

- Ideally suited to harvest in winter
- Used predominantly in the lower North Island and South Island
- Medium - dark green external colour with excellent wrapper leaves

HR: BL:1-19,21,23,32, LNSV

Sow	Harvest
March to May	June to September



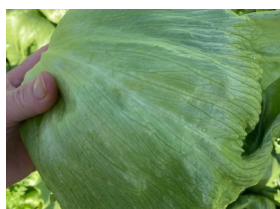
### LIBERKIN

*Liberkina* is for mid summer to early autumn harvest

- Medium round flat head shape
- Excellent wrapper leaves
- Good shape for wrapped lettuce

HR: BL:1-36, Nr:0

Sow	Harvest
October to November	January to March



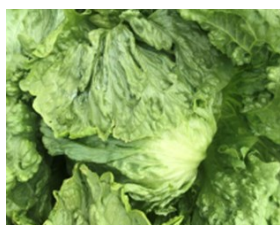
### SPRINKIN

*Sprinkin* is for late summer early autumn harvest

- Compact round head shape
- Slightly blistered leaf
- Nice wrapper leaves

HR: BL:1-36, Nr:0

Sow	Harvest
November to December	March to April



### WINTERFELL

*Winterfell* is suited to cool late autumn and winter harvest

- Flat round head shape
- Excellent wrapper leaves with some slight blister
- Medium - dark green colour

HR: BL:1-36, Nr:0, LNSV

Sow	Harvest
February to July	June to November



### VANGUARDIA

*Vanguardia* is suited to a cool season harvest

- A large round headed vanguard type
- Excellent vigour and frame
- Dark green colour

HR: BL:1-36, LNSV

Sow	Harvest
March to May	July to September

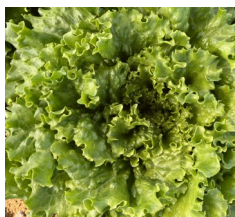
## LETTUCE - FANCY & MULTILEAF *Lactuca sativa*

### BATEIRA

*Bateira* is green Batavia for Hydro & field

- Crisp leaves
- High yield for year round production
- Great for sandwiches

HR: BL:1-37, Nr:0



### JUNIPER

*Juniper* is a green oak for Hydro

- Medium green with good weight
- Excellent tip burn tolerance
- Easy to cut

HR: BL:1-36, Nr:0



### Lettuce Disease Key

BL - *Bremia lactucae* - Downy Mildew

Fol - *Fusarium oxysporum* - Fusarium wilt

Nr - *Nasonovia ribisnigri* - Lettuce Aphid

LNSV - Lettuce Necrotic Stunting Virus

LMV - Lettuce Mosaic Virus

Pb - Root Aphid

CR - Corky Root



## LETTUCE - MULTILEAF *Lactuca sativa*

### LEM 3210

**LEM 3210** has a spikey multileaf

- Crispy leaf texture
- Medium yield
- Compact shape

HR: BL:1-37, Nr:0



### POPLAR

**Poplar** is a green Oak for Hydro

- Vigorous
- Brilliant green with great weight
- Holds well, easy to handle

HR: BL:1-37, Nr:0



### MULTIGREEN 101

**Multigreen 101** has deeply incised leaves

- Crunchy leaf structure
- Small cut point
- Very good against tipburn

HR: BL:1-36, Nr:0, IR: Fol:1



### MULTIRED 4

**Multired 4** is triple red Oak

- Vibrant Red colour
- Compact
- Medium vigour

HR: BL:1-36, Fol:1



## MELON - HONEYDEW & ROCK *Cucumis melo*

### SILVERBALL

**Silverball** is a main-late season honeydew variety

- White rind and green internals
- Fruit quality, colour and flavor are good
- Fruit size is 1.7-2kg, with strong vine
- Small internal cavity and firm flesh

HR: Fom:2, IR: Px:1,2



### SILVERROCK

**Silverrock** is a 2nd early-mid season variety

- White rind and green internal-honeydew
- Fruit quality, colour and flavor are good
- Fruit size is 1.6-1.9kg, with strong vine
- Small internal cavity and firm flesh

HR: Fom:0, 2, IR: Px:1,2



### ADEMWEST

**Ademwest** is a mid season variety

- A Harper type rockmelon—no sutures
- Fruit quality, colour and flavour are good
- Fruit size is 1.4-1.8kg
- Fruit shape blocky round to oval

HR: Fom:0,1,2, IR: Px:1,2



### SUNPEEK

**Sunpeek** is a mid-late maturing variety

- Sutured cantaloupe, round to oval
- Deep orange flesh colour
- Yellow skin and net
- Fruit size is 1.8-2.3kg

HR: Fom:0,1,2, IR: Px:1,2,5, Gc,



## TOMATO - INDOOR *Solanum lycopersicum*

### PROVINE

**Provine** is grown as a large loose or truss variety

- High yielding, producing high fruit numbers
- Fruit quality, colour and flavour are good
- Fruit size is approx. 10g smaller than the standard, but yield is not

HR: Fol:1-2, ToMV:0-2, For, Va, Vd, Pf:A-E  
IR: Pn



### RONVINE

**Ronvine** has ToBRFV resistance

- Trusses can be pruned to 5-6
- Deep red, well shaped 135-150gm fruit
- Good level of resistance and high yield potential

HR: Fol:0-1, ToMV:0-2, For, Va:0 Pf:A-E,  
ToBRFV IR: Pn



## WATERMELON *Citrullus lanatus*

### 3239

**3239** is a seedless watermelon with strong vigour

- Mid maturity round seedless melon
- Uniform medium size 4-6kg fruit
- Solid dark green rind



### 31604

**31604** is an improved version of 3239

- Mid maturity round seedless melon
- Uniform medium size 4-6kg fruit
- Solid dark green rind
- Good shipping quality

